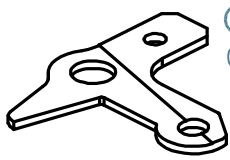
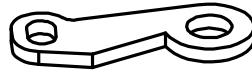


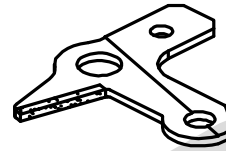
5080 - SPLICER SCISSORS



⊙ ○ 5081
(230) 56801 146006265



⊙ ○ 5082
(225) 56801 146012426

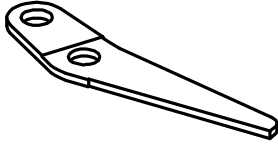


● 5083

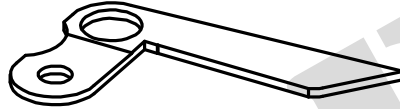


● 5084

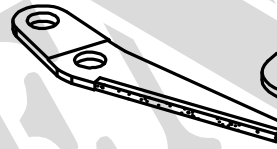
5150 - LOWER YARN SCISSORS (230 RM , 338 RM)



⊙ ○ 5151 (5041)
(50) 40168 138015744



⊙ ○ 5152 (5042)
(44) 40168 138012218

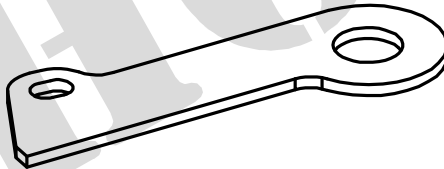


● 5153 (5043)

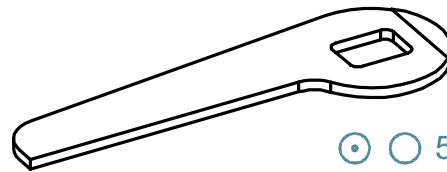


● 5154 (5044)

5130 - SUCTION TUBE SHEARS (147)

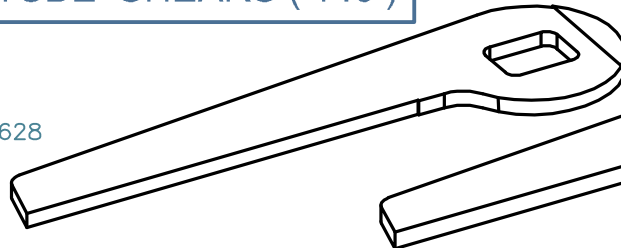


⊙ ○ 5131
(19) 33045 146010280

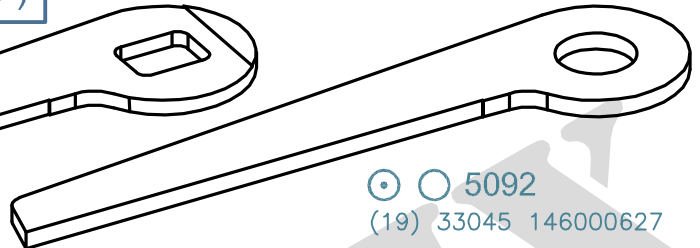


⊙ ○ 5132
(20) 33045 146010281

5090 - SUCTION TUBE SHEARS (146)



⊙ ○ 5091
(20) 33045 146000628

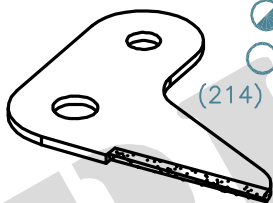


⊙ ○ 5092
(19) 33045 146000627

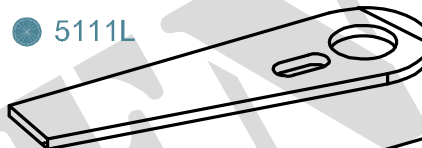
5100 - TRANSFER HEAD SCISSORS



● 5104
○ 5102
(227) 72045 146004807

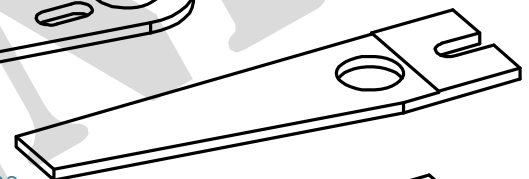


● 5103
○ 5101
(214) 72045 146004806

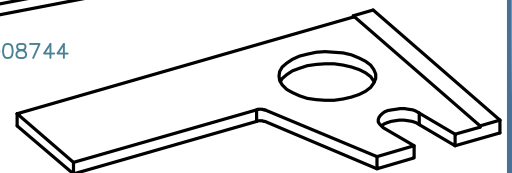


● 5111L

● 5112L
(44) 85035 158018202
(5112R) 66020 148008744



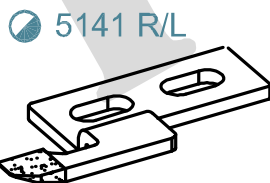
● 5121 R
86022 158015199
(5121L) 86020 158015200



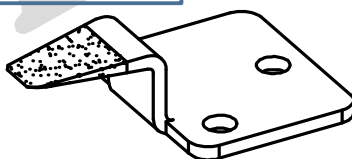
5110 - BASE / ROLLING SCISSORS

5120 - ROLLING SCISSORS

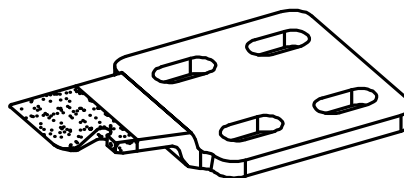
5140 - YARN REALESER



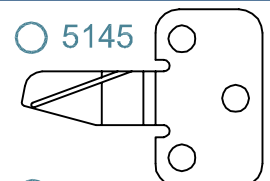
● 5141 R/L



● 5142 R/L
(45) 65510 148008654



● 5143 R/L



○ 5145



○ 5146

MATERIAL CODE : ● SOLID CARBIDE , ○ HSS , ● BRAZED CARBIDE , ⊙ TIN COATED