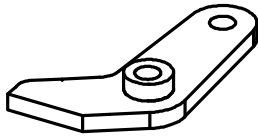
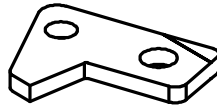


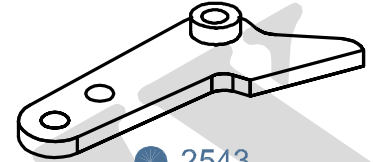
2540 - JAT 710 / 610 TERRY (SELVEDGE RH)



● 2541



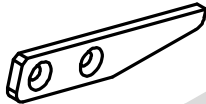
● 2542
J1302-01010-0A



● 2543
J1301-02020-00

● 2545
J1301-02030-00

2550 - JAT (WEFT SHORT)



● 2552 M2
J1305-02040-0A



● 2551 M3
J1305-02050-0A

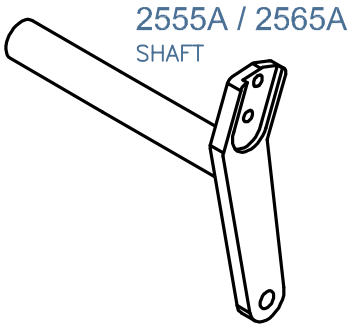
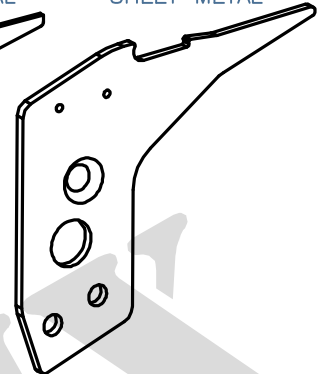
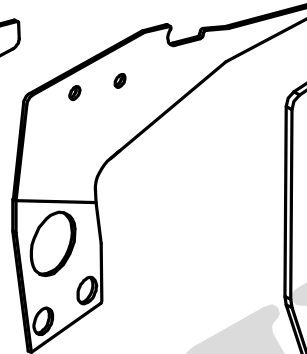
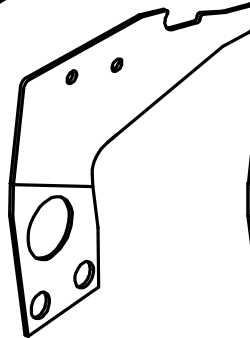
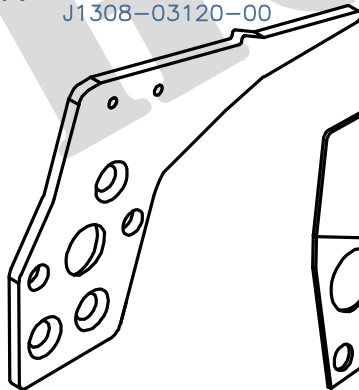
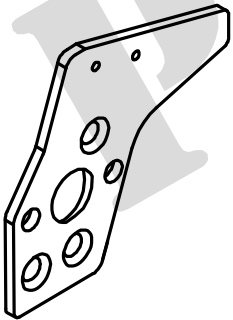
2556A / 2566A
SHEET METAL

2556B / 2566B
SHEET METAL
J1308-03120-00

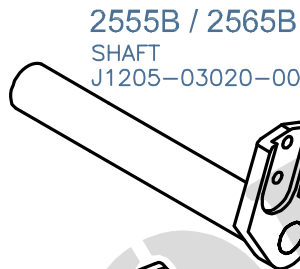
2556C / 2566C
SHEET METAL

2556D / 2566D
SHEET METAL

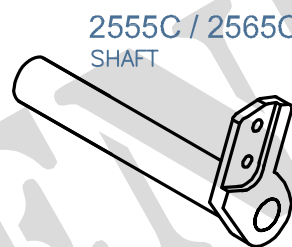
2556E / 2566E
SHEET METAL



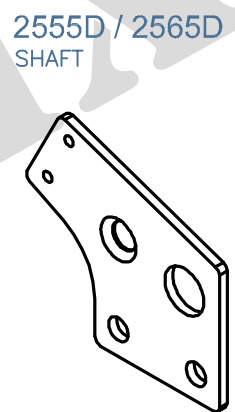
2555A / 2565A
SHAFT



2555B / 2565B
SHAFT
J1205-03020-00

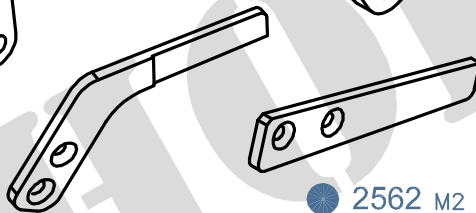


2555C / 2565C
SHAFT

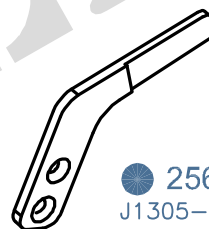


2555D / 2565D
SHAFT

● 2561 M3
J1305-02050-00



● 2562 M2
J1308-02040-00

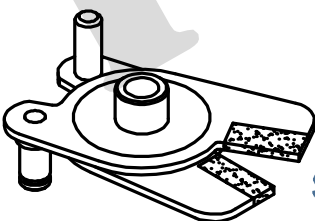


● 2563 M3
J1305-02050-00

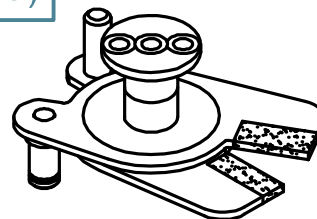
2556F / 2566F
SHEET METAL

2560 - JAT (WEFT LONG)

2580 & 2590 - (TUCK IN SELEDGE SCISSOR)



2580-00
J5304-49011-00
SCISSOR ASSEMBLY



2590-00
MODIFIED ASSEMBLY

MATERIAL CODE : ● SOLID CARBIDE , ○ HSS , ◐ BRAZED CARBIDE , ⊙ TIN COATED