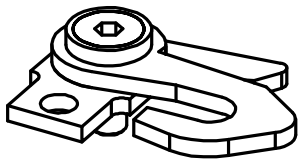
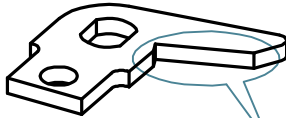


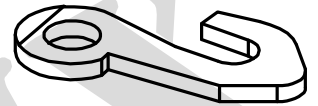
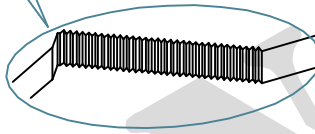
3700 - (WEFT)



3700-00
ASSEMBLY
712525 (STEEL BUSH)



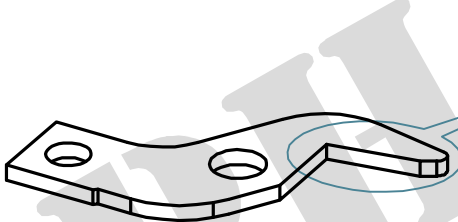
3701
472054



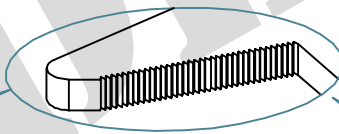
3702
471105

3701 S
WITH SERRATIONS

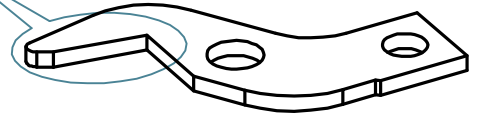
3710 - (SELVEDGE RH & LH)



3712 R
471188



3712 S
WITH SERRATIONS



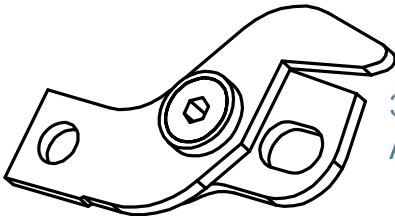
3712 L
471198



3713 R
322552

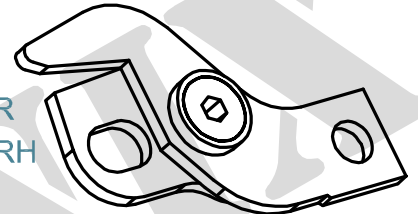


3713 L
322553

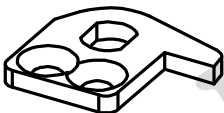


3710-0L (STEEL BUSH)
ASSEMBLY LH
705805

3710-0R
ASSEMBLY RH
705804



3720 - (TUCK IN SELVEDGE RH & LH)



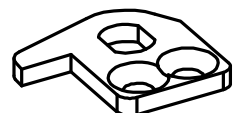
3721 R
472062G



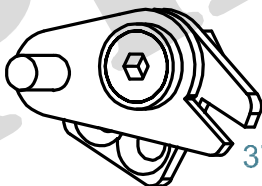
3722 R
881026G



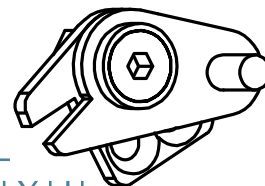
3722 L
881025D



3721 L
472063D



3720-0R
ASSEMBLY RH



3720-0L
ASSEMBLY LH

MATERIAL CODE : ● SOLID CARBIDE , ○ HSS , ◐ BRAZED CARBIDE , ⊙ TiN COATED