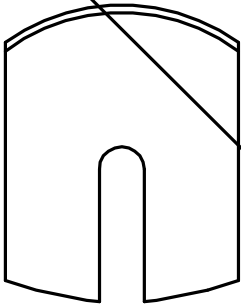
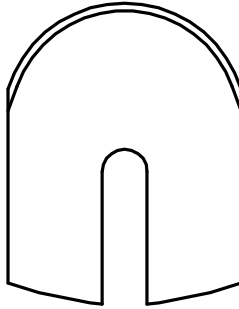


**7900 - ( CARPET BLADE )**



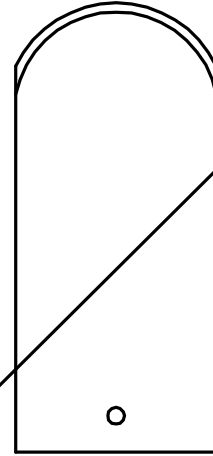
○ 7901

CODE    THK.  
7901.35   0.35  
7901.45   0.45  
Steel Hardness : 60-62HRc.



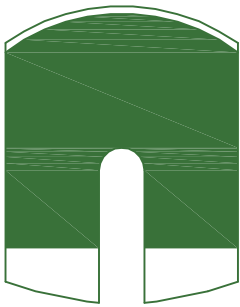
○ 7902

CODE    THK.  
7902.35   0.35  
7902.45   0.45  
Steel Hardness : 60-62HRc.



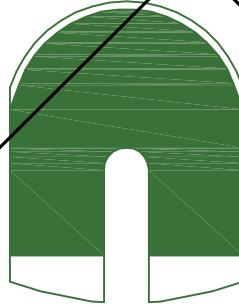
○ 7903

CODE :    THK.  
7903.30   0.30  
7903.45   0.45  
Steel Hardness : 60-62HRc.



○ 7901P  
Teflon Coated

CODE    THK.  
7901.35P   0.35  
7901.45P   0.45  
Steel Hardness : 60-62HRc.



○ 7902P  
Teflon Coated

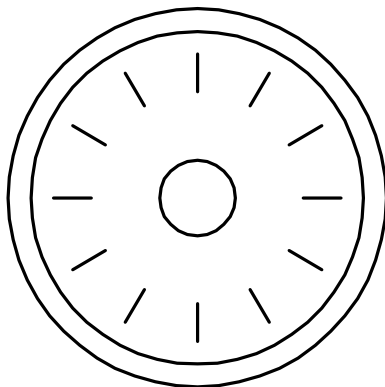
CODE    THK.  
7902.35P   0.35  
7902.45P   0.45  
Steel Hardness : 60-62HRc.



○ 7903P  
Teflon Coated

CODE    THK.  
7903.30P   0.30  
7903.45P   0.45  
Steel Hardness : 60-62HRc.

**7900 - ( CARPET BLADE )**



● 7909

SOLID TUNGSTEN CARBIDE  
SIZE : D50 X D10 X 0.5THK

MATERIAL CODE : ● SOLID CARBIDE , ○ HSS , ◐ BRAZED CARBIDE , ⊙ TiN COATED